



Pointer 33°57'22.71" N 85°22'10.38" W elev 274 m

Streaming [|||||] 100%

© 2007 Google™ Eye alt 5.09 km



Harris Loop

Poyash Rd

Branch Rd

Lewis Rd

Quarry Rd

Judkin Mill Rd

Crest Oak Way

Akes

Piedmont Hwy

Palmer Rd

278

6

Hoard Rd

Pine Bower Rd

Akes Station Rd

Johnson Lake Rd

Garmon Rd

Highland Me

© 2008 Tele Atlas

© 2007 Google™

Pointer 33°58'03.82"N 85°19'23.86"W elev 271 m

Streaming [|||||] 100%

Eye alt 5.09 km



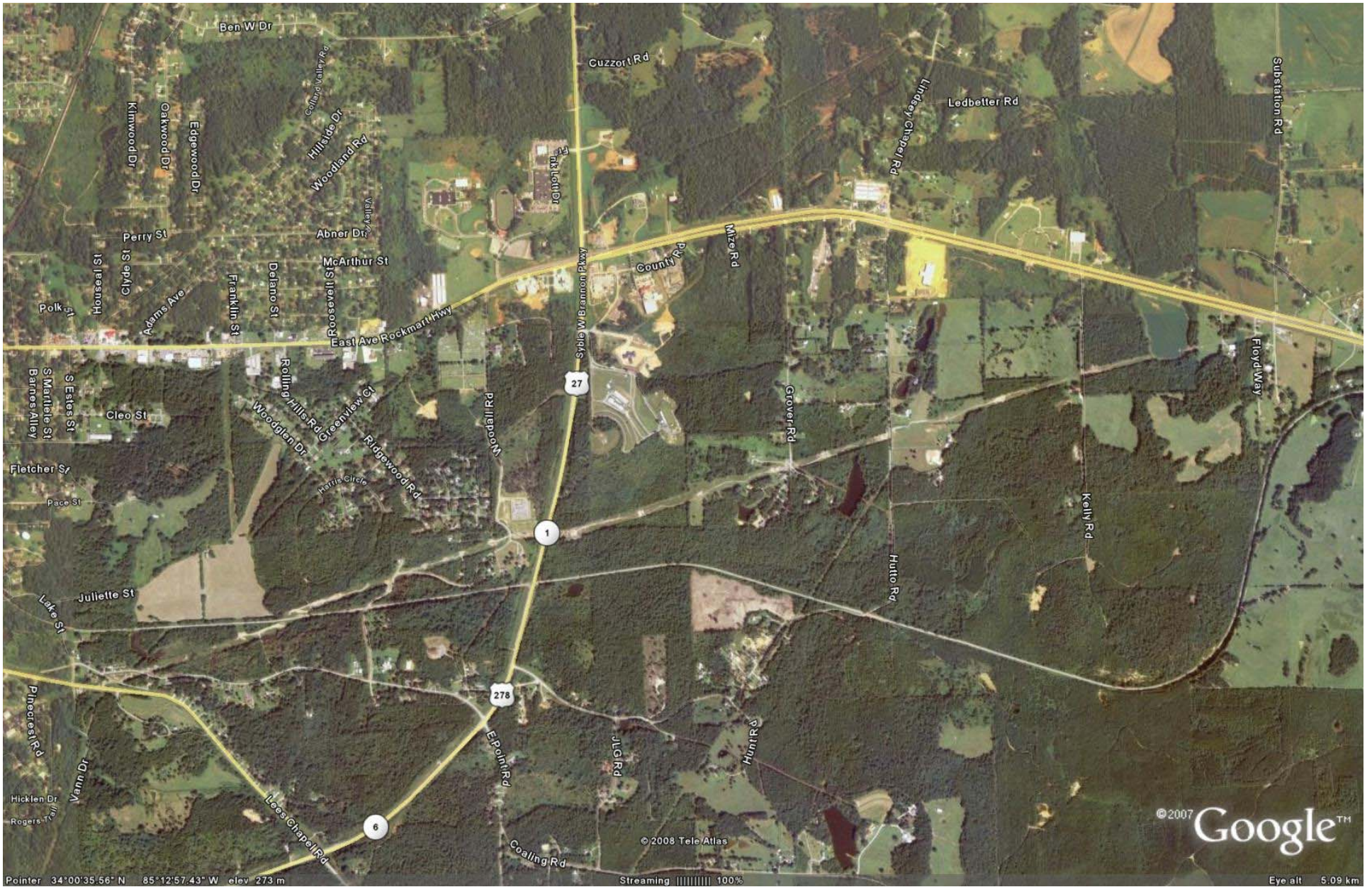
Pointer 33°59'14.00" N 85°17'22.16" W elev 258 m

Streaming [|||||] 100%

© 2007 Google™

Eye alt 5.09 km





Pointer 34°00'35.56" N 85°12'57.43" W elev 273 m

© 2008 Tele Atlas
Streaming [|||||] 100%

© 2007 Google™

Eye alt 5.09 km



Subs
278
6
Floyd Way

Wimberly Hill Loop
Rockmart Hwy

Grady Rd
Galilee Rd

Hendrix Rd

Knight Rd

Stringer Rd

Old Cedar town Rd

Gin Rd

Lady Ln

Bethlehem Rd

Cedar town Hwy

Barber Rd

Airport Rd

Fish

Coaling Rd

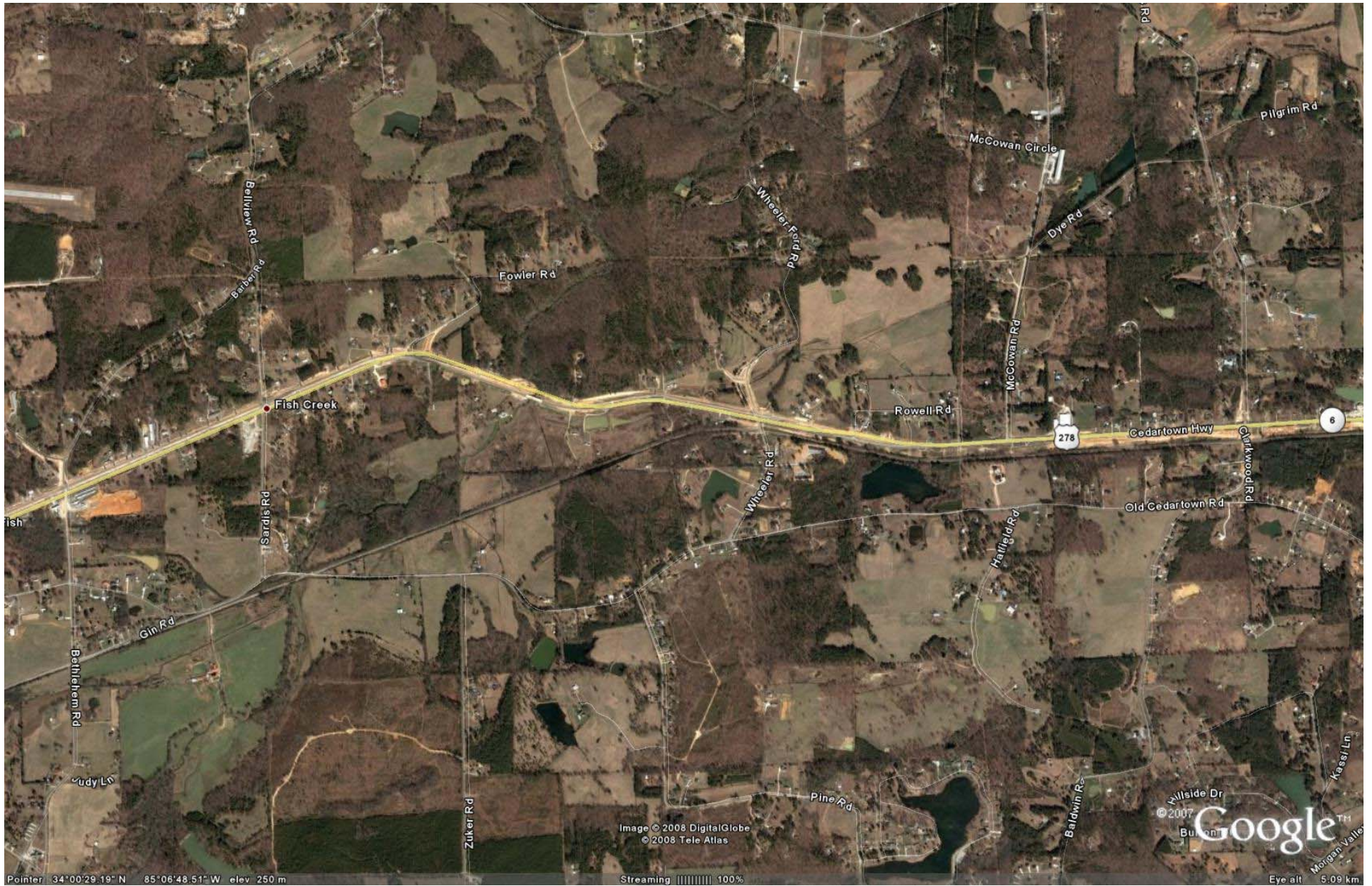
Image © 2008 DigitalGlobe
© 2008 Tele Atlas

© 2007 Google™

Pointer 33°59'58.49" N 85°09'53.99" W elev 264 m

Streaming 100%

Eye alt 5.09 km

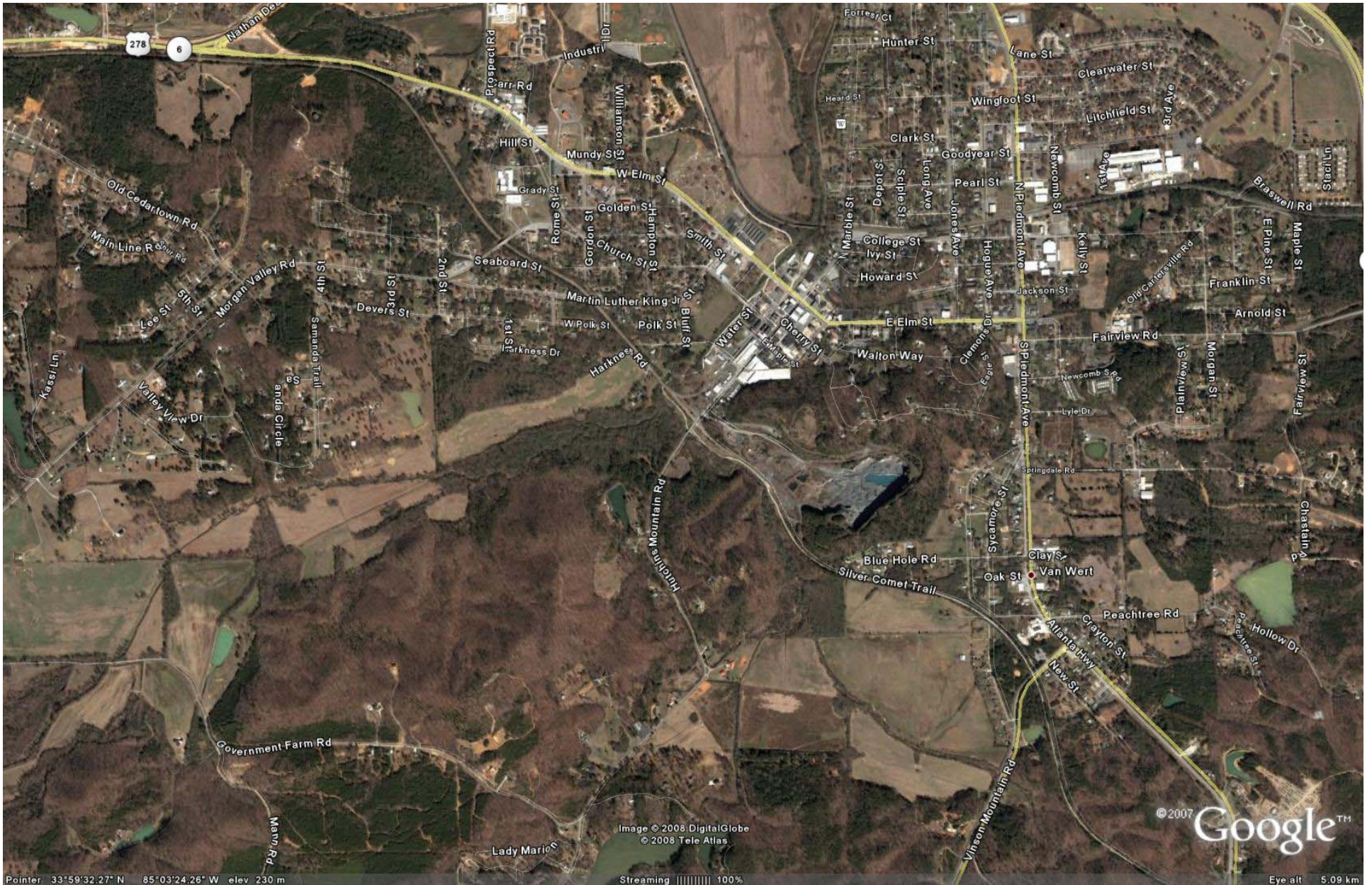


Pointer 34°00'29.19" N 85°06'48.51" W elev 250 m

Image © 2008 DigitalGlobe
© 2008 Tele Atlas

Streaming 100%

© 2007 Google™
Eye alt 5.09 km



Pointer 33°59'32.27" N 85°03'24.26" W elev 230 m

Image © 2008 DigitalGlobe
© 2008 Tele Atlas

Streaming 100%

© 2007 Google™

Eye alt 5.09 km

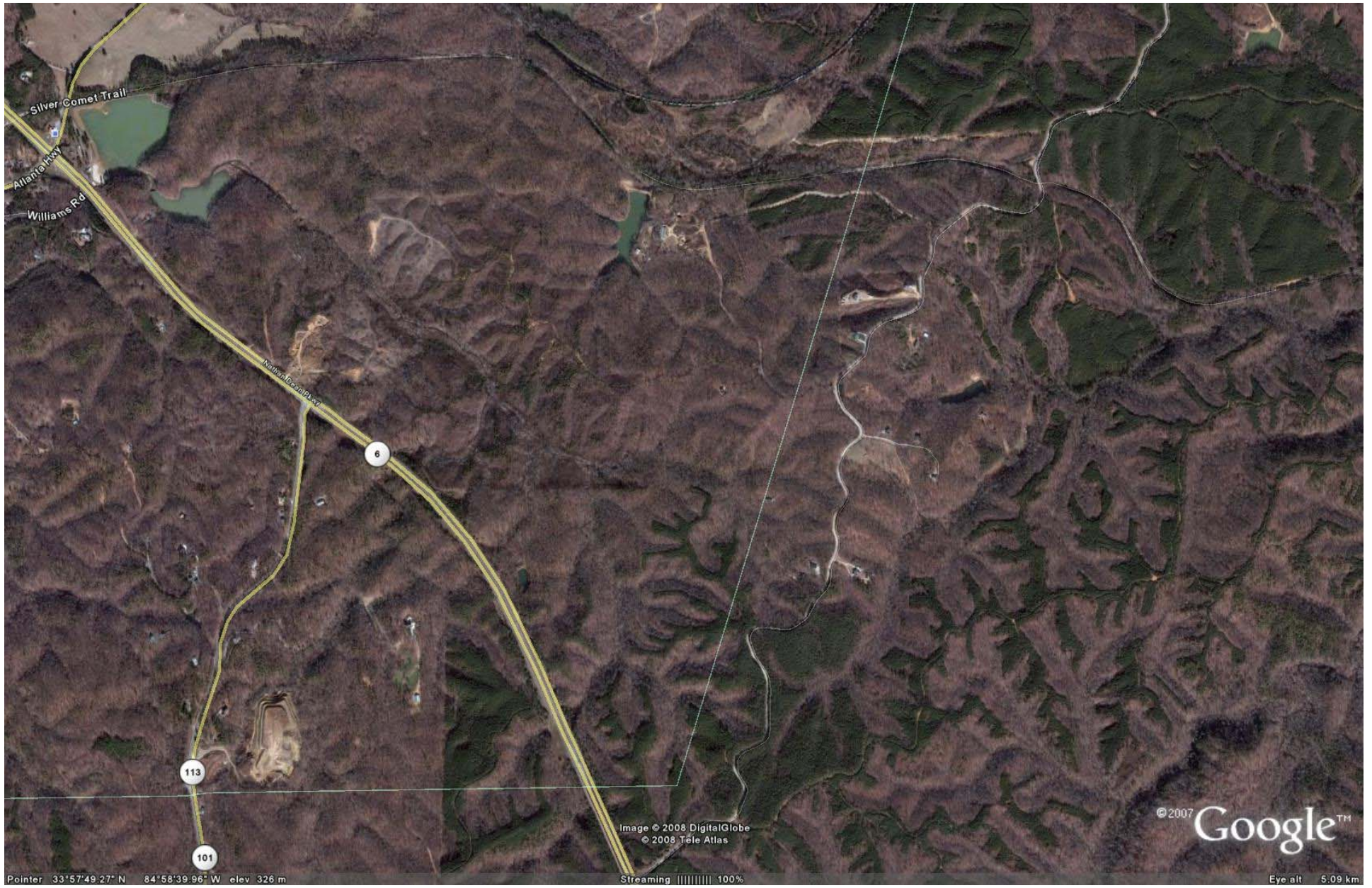


Pointer 33°58'43.78"N 85°00'56.24"W elev 320 m

Image © 2008 DigitalGlobe
© 2008 Tele Atlas

Streaming ||||| 100%

© 2007 Google™
Eye alt 5.09 km



Pointer 33°57'49.27" N 84°58'39.96" W elev 326 m

Image © 2008 DigitalGlobe
© 2008 Tele Atlas

Streaming [|||||] 100%

© 2007 Google™

Eye alt 5.09 km



McPherson Church Rd

Hanlin

Hanlin Rd

Silver Comet Trail

Gore Rd

Gore Lakes Rd

Anne Sue Path

Willow Springs Rd

Martin Rd

McPherson Loop

Gore Rd

Spring Rd

Settlement Rd

Mt. Olive Rd

Willem

Jimmy Campbell Pkwy

Tucker Blvd

Rockmart Hwy

Wayside Ln

Mt. Olive Loop

© 2007 Google

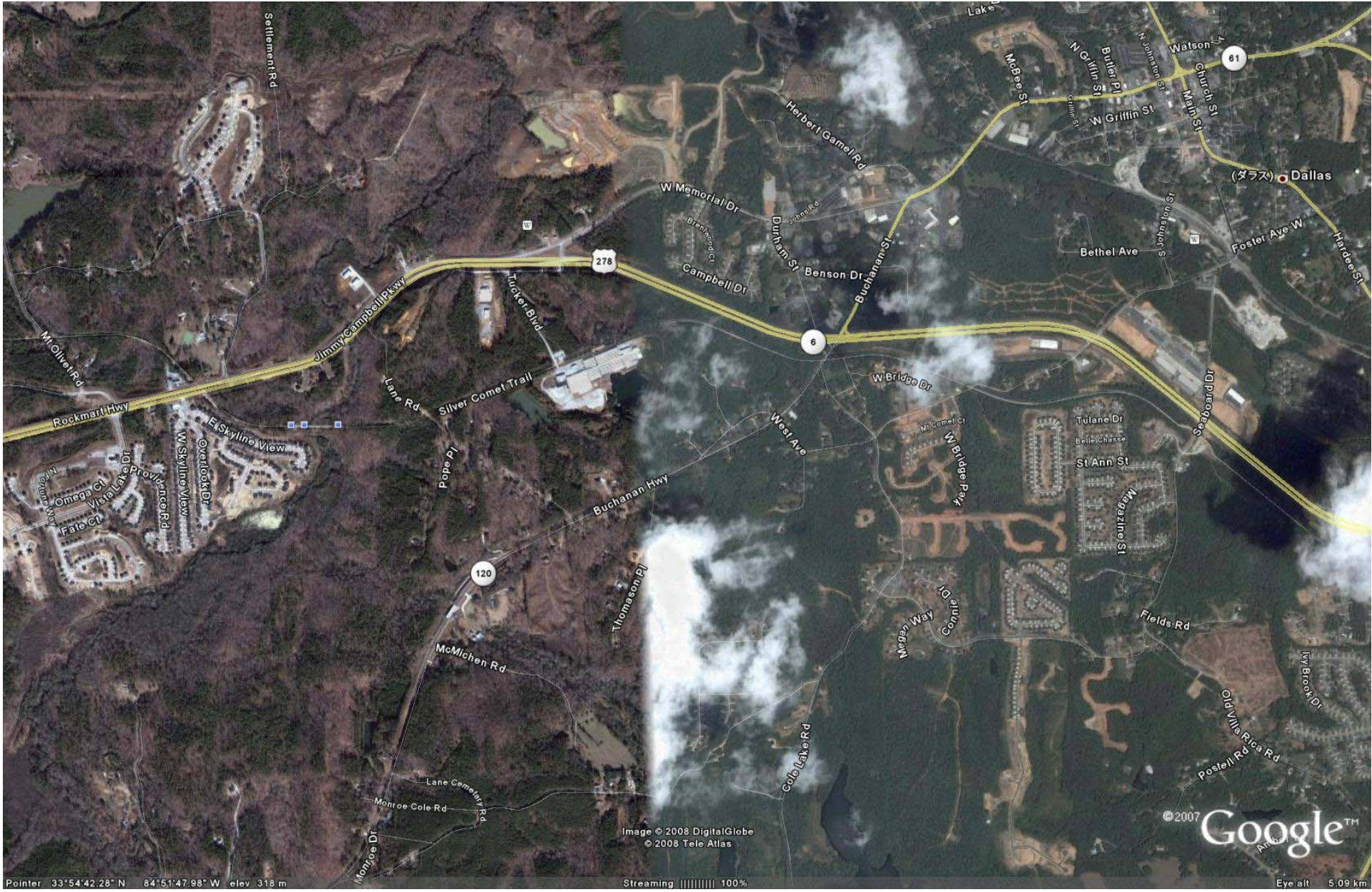
Pointer 33°55'45.39" N 84°53'49.54" W elev 298 m

Image © 2008 DigitalGlobe
© 2008 Tele Atlas

Streaming 100%

6 278

Eye alt 5.09 km



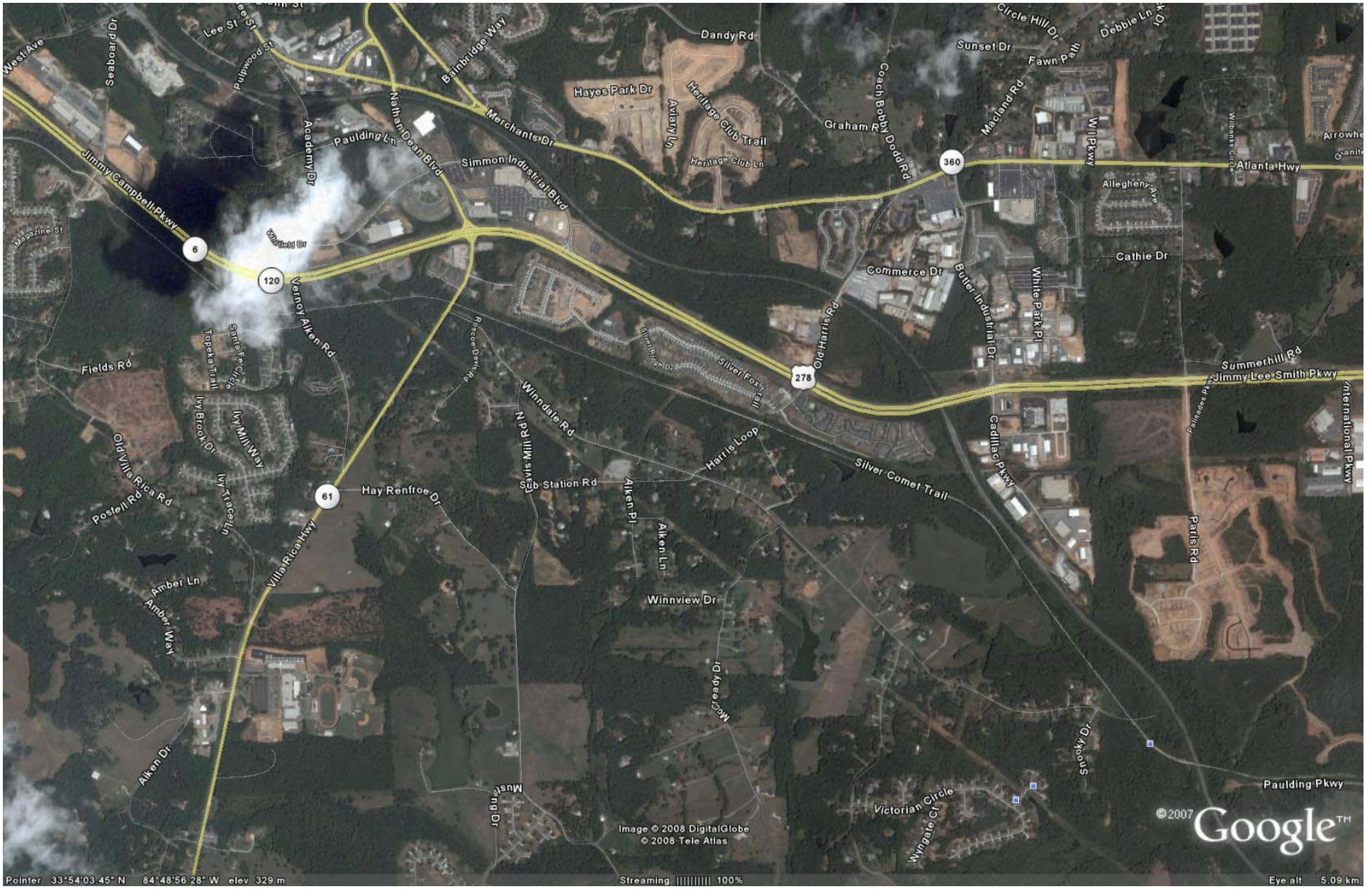
Pointer 33°54'42.28" N 84°51'47.98" W elev 318 m

Image © 2008 DigitalGlobe
© 2008 Tele Atlas

Streaming 100%

© 2007 Google™

Eye alt 5.09 km



Pointer 33°54'03.45" N 84°48'56.28" W elev 329 m

Image © 2008 DigitalGlobe
© 2008 Tele Atlas

Streaming 100%

© 2007 Google™

Eye alt 5.09 km



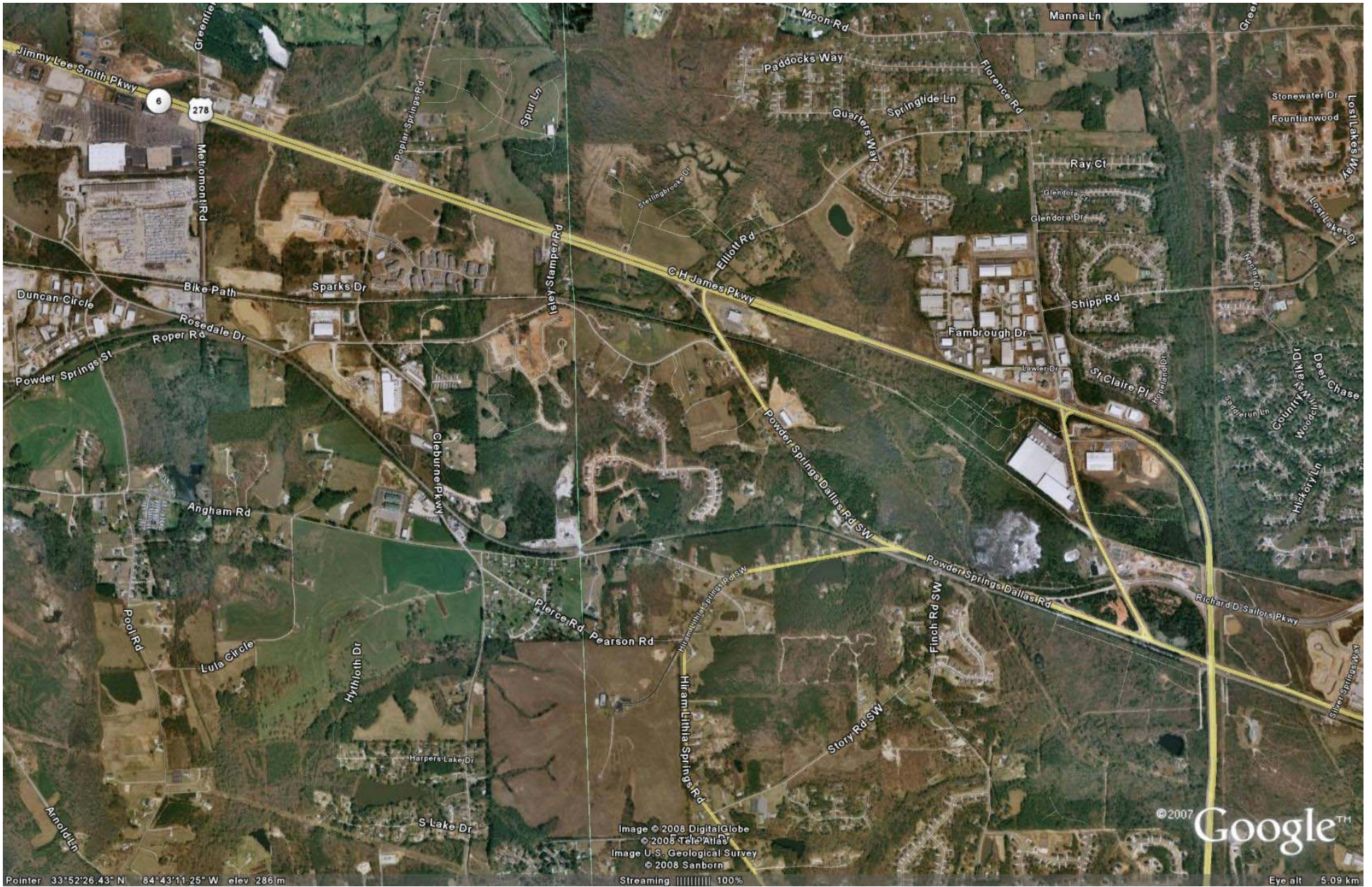
Pointer 33°53'01.88"N 84°45'55.63"W elev 289 m

Image © 2008 DigitalGlobe
© 2008 Tele Atlas
Image U.S. Geological Survey

Streaming 100%

© 2007 Google™

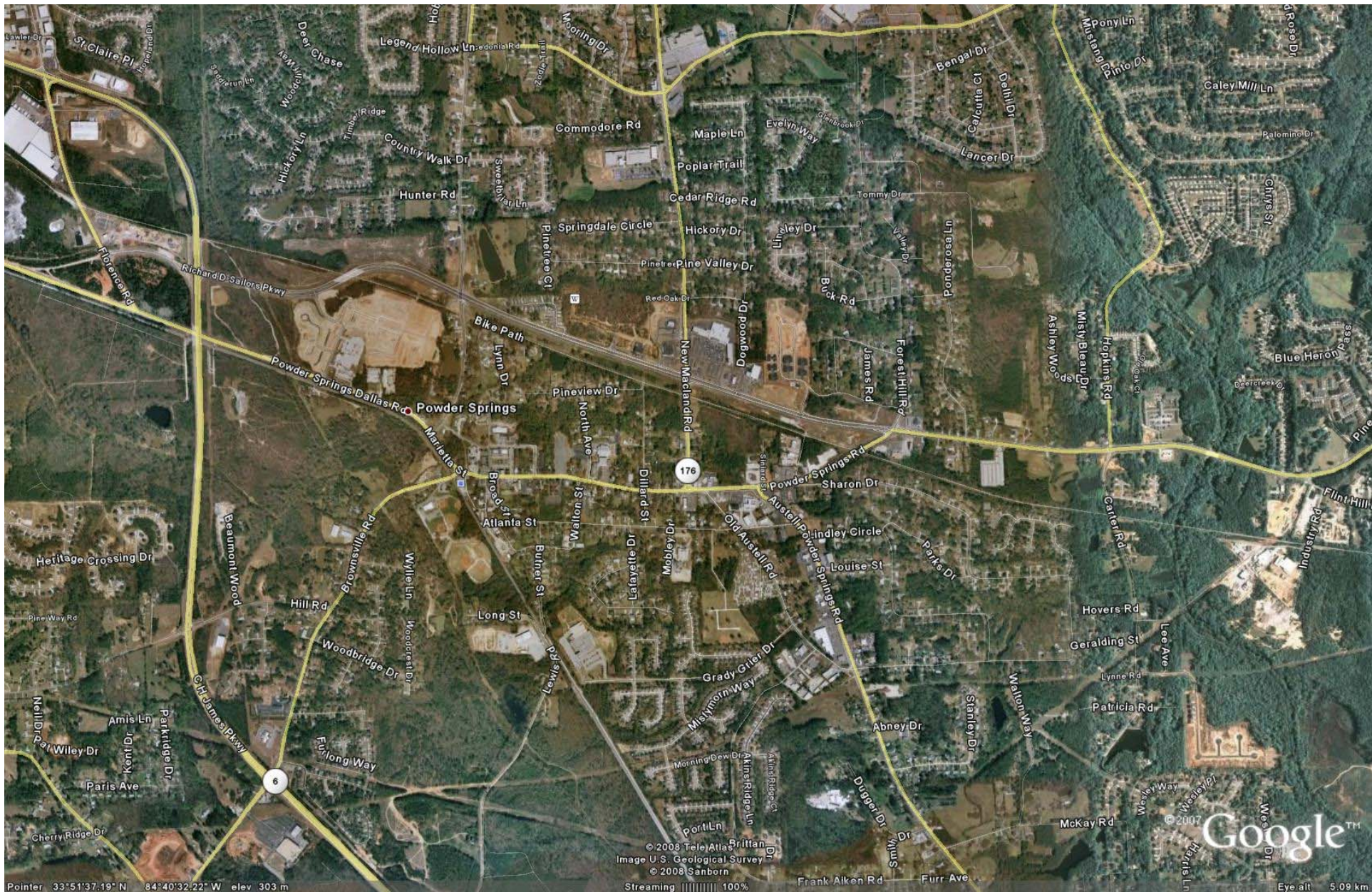
Eye alt 5.09 km



Pointer 33°52'26.43" N 84°43'11.25" W elev 286 m

Image © 2008 DigitalGlobe
© 2008 Tele Atlas
Image U.S. Geological Survey
© 2008 Sanborn
Streaming 100%

© 2007 Google™
Eye alt 5.09 km

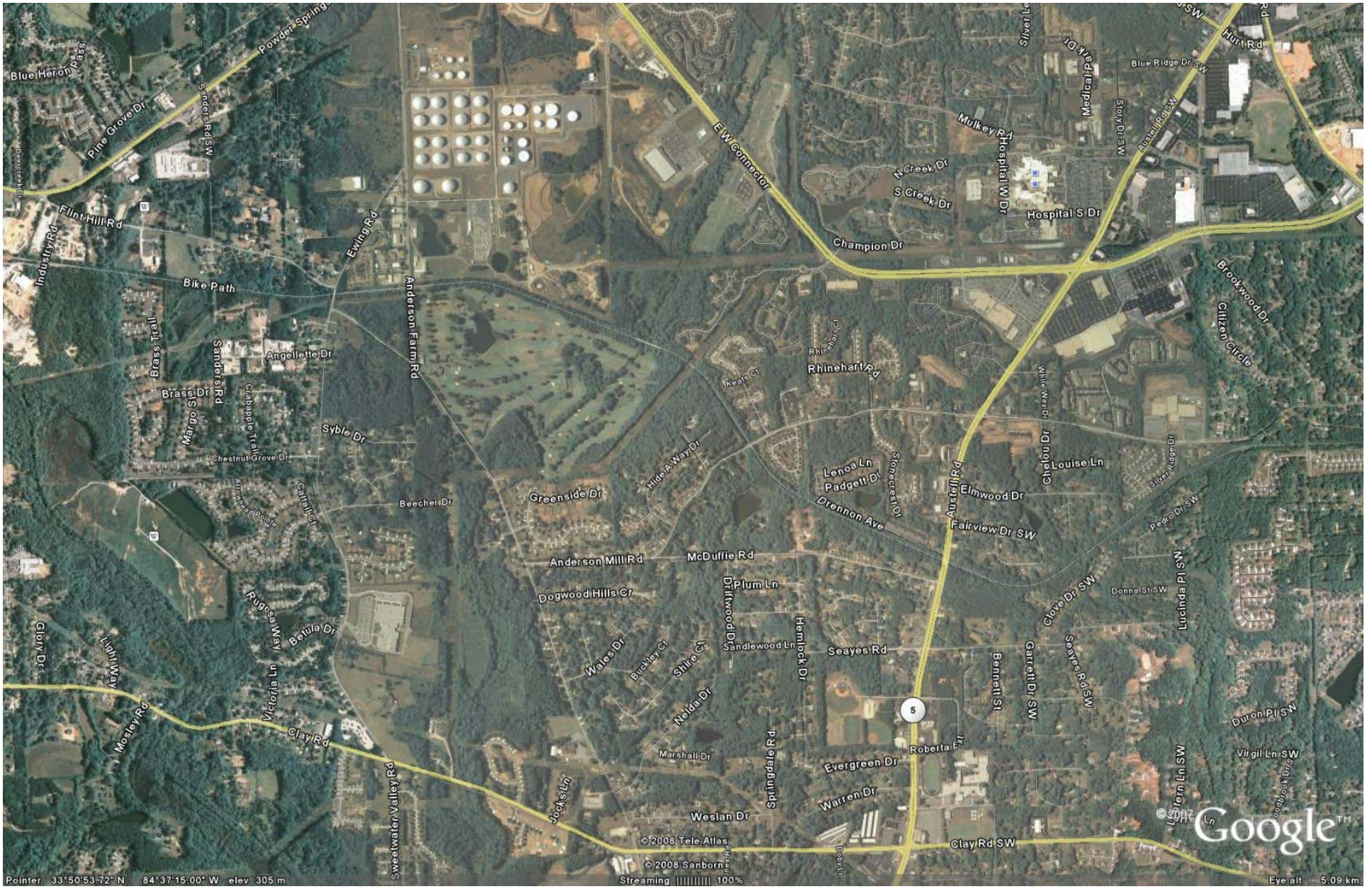


Pointer 33:51:37.19° N 84:40:32.22° W elev 303 m

© 2008 Tele Atlas
Image U.S. Geological Survey
© 2008 Sanborn
Streaming 100%

Google™

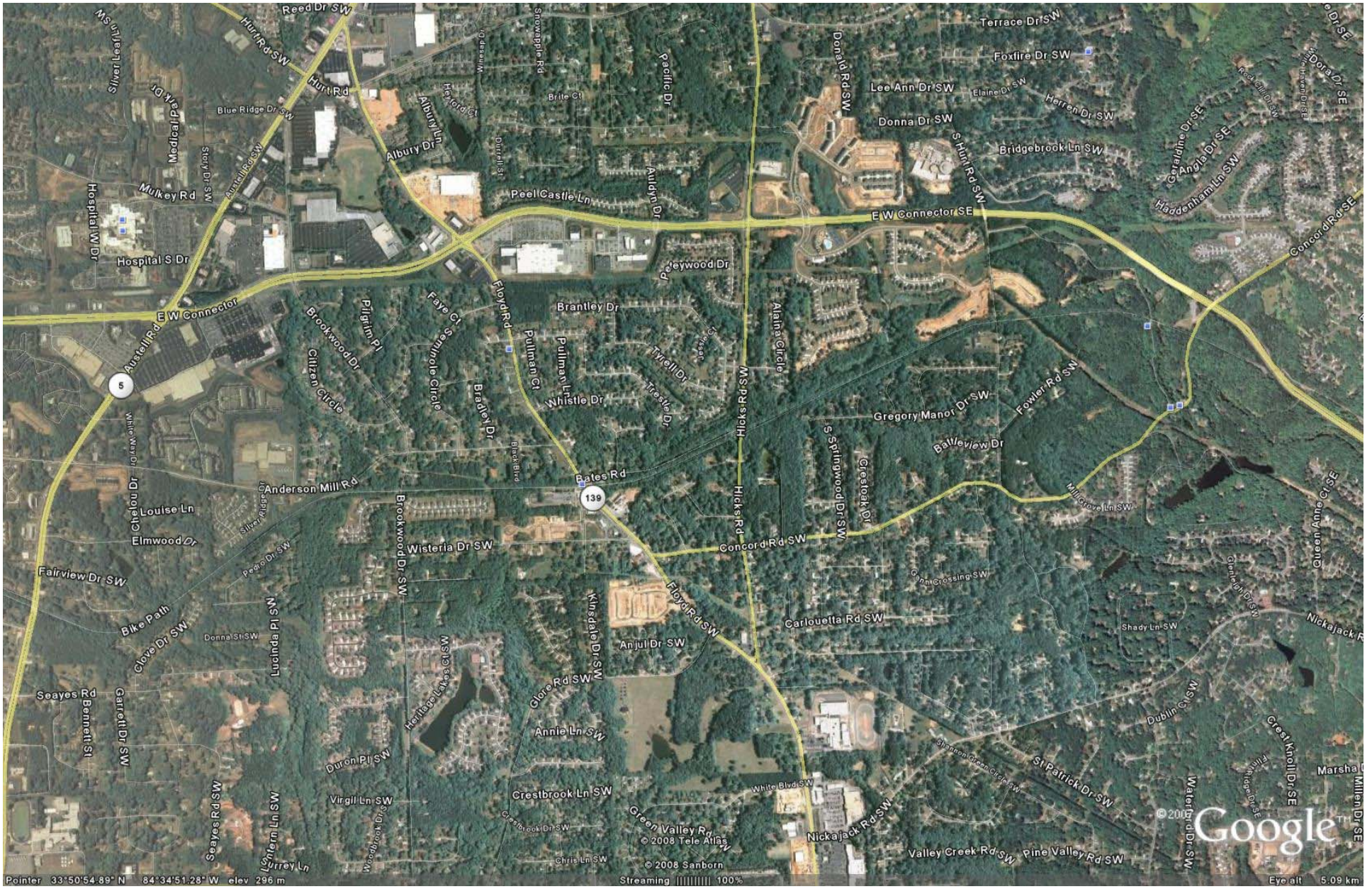
Eye alt 5.09 km



Pointer 33°50'53.72" N 84°37'15.00" W elev 305 m

©2008 Tele Atlas
©2008 Sanborn
Streaming 100%

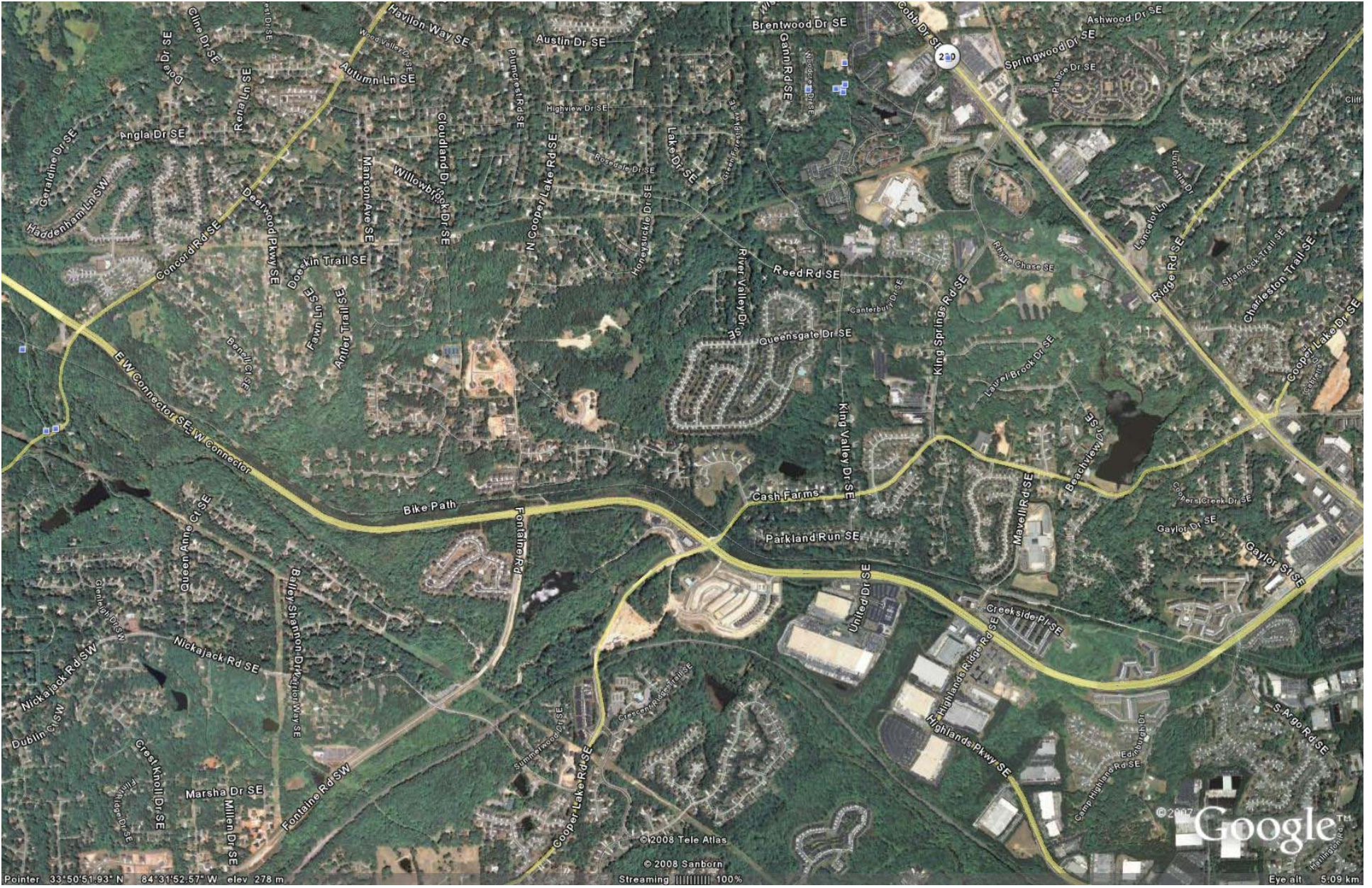
Google™
Eye alt 5.09 km



Pointer 33°50'54.89" N 84°34'51.28" W elev 296 m

© 2008 Sanborn © 2008 Tele Atlas Streaming 100%

Google Eye alt 5.09 km



Pointer: 33:50:51.93°N 84:31:52.57°W elev. 278 m

© 2008 Tele Atlas
© 2008 Sanborn
Streaming 100%

Google
Eye alt: 5.09 km